

The European Cooperation in Science and Technology (COST) Programme

Amy Radlberger and Helmut Schaschl, DLE Research Services and Career Development

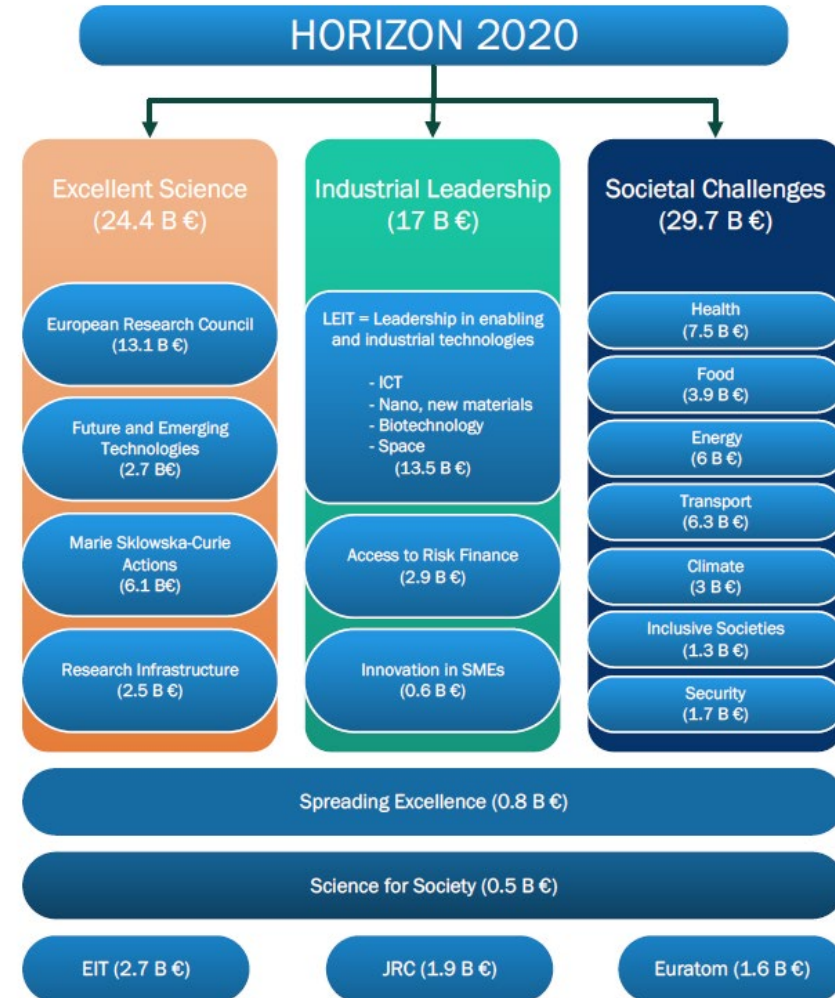




Overview of COST and Application Process



- EC's main Funding Programme for Research and Innovation projects
- Budget 80 billion €
- Both mono and multi beneficiary projects
- Both top down and bottom up topics





In a nutshell: Funding organisation for the creation of research networks, called [COST Actions](#)

COST MISSION:

- *“COST provides networking opportunities for researchers and innovators in order to strengthen Europe’s capacity to address scientific, technological and societal challenges.”*
- The three strategic priorities:
 - Promoting and spreading excellence
 - Fostering interdisciplinary research for breakthrough science
 - Empowering and retaining young researchers and innovators
- COST implements its mission by funding bottom-up, excellence-driven, open and inclusive networks for peaceful purposes in all areas of science and technology.
- Benefits: Knowledge exchange, interdisciplinary and intersectoral (academic and industry), development of new ideas.



- Improve and extend your EU and international networks
- Develop new research ideas (and convert these ideas into new research funding opportunities)
- Promotion of your research field (at the EU/global level)
- Relatively easy (and more than one way) to participate. More on that later....
- Improve chances for Horizon 2020 /Horizon Europe applications (statistics show 33% success rate of COST Action proposals compared to 15% of applications from non-COST network applicants)
- Something in it for everyone at all career stages
- Opening up to many „invitation only“ training and multi action COST Action networking opportunities



- 4 years of funding for a joint work programme
- Funding for :
 - organising meetings
 - training schools
 - short term scientific missions (up to six months)
 - other networking activities (conference grants)
- Average financing is EUR 130,000 per annum (dependent on budget availability, renewed each year) for participation by typically 25 COST Members.



- A COST Action proposal can be submitted at any time of the year
- Normally two collection dates per year
- ~~29th April~~ **new deadline 29th October. Only one cut off now this year (December cut off cancelled)**
- One-stage submission via the e-COST submission tool
- The proposal requires filling in a few sections online and uploading a technical annex of up to 15 pages
- Proposal Template (max. 15 pages)
 - Scientific & Technological Excellence (15)
 - Networking Excellence (15)
 - Impact (15)
 - Implementation (5)
- Guidelines: https://www.cost.eu/wp-content/uploads/2018/08/COST_Open_Call_SESA_guidelines.pdf



- The Network of Proposers must represent at least 7 proposers affiliated to entities located in at least 7 different COST Full or Cooperating Members (one Main Proposer plus at least 6 Secondary Proposers) amongst which a minimum number (4, but depends on number of proposers) shall be from COST Inclusiveness Target Countries
- Proposals are anonymous. Proposals may not contain any direct or indirect reference to people and/or institutions participating in the Network of Proposers
- There is also a style guide
- Look at Memorandums of Understanding: these were the applications!



Getting Involved Without Applying





- 2 Management Committee Members per Country

- Running actions which are open to new Austrian participants : <https://www.ffg.at/europa/cost/bereiche-at-offen>

Source: FFG

- Expression of interest to Cost National Coordinator FFG

COST EUROPEAN COOPERATION IN SCIENCE AND TECHNOLOGY **Bundesministerium** Verkehr, Innovation und Technologie **FFG** Forschung

COST Interessensklärung
COST Expression of Interest
 Teilnahme an der Management Committee (MC)
 Intention of participation in the Management Committee (MC)

1. Angaben zur COST Aktion / Details of COST Action

Name der COST-Aktion / No. of COST Action: Titel der COST-Aktion / Title of COST Action:

2. Angaben zur Forschungseinrichtung / Details of Research Facility

Name der Organisation / des Instituts / Abteilungs / Fakultät / Name of Organization / Institute / Department / Faculty:

Adresse / Address:

PLZ / ZIP: Ort / City:

3.a Angaben zur für die Management Committee vorgeschlagenen Person (siehe unten Kurze CV (max. 1.5 kb)) / Details about person nominated for Management Committee (please include a short CV (max. 1.5 page))

Nachname / Surname: <input type="text"/>	Vorname / First name: <input type="text"/>
Funktion / Funktion: <input type="text"/>	
Geschlecht / Gender: <input type="radio"/> W / <input type="radio"/> M / <input type="radio"/> J / m	
Telefonnummer / Telephone number: <input type="text"/>	E-Mail-Adresse / E-Mail address: <input type="text"/>
Early Career Investigator** <input type="radio"/> JA / yes <input type="radio"/> NEIN / no	

**COST legt Wert auf Gender-Parität und die Einbindung von jungen Forschenden. Da wird erwartet, dass bei der Einreichung von Bewerbungen Personen in Betracht gezogen werden, die in einer frühen Karrierephase sind. COST fördert die gender-Parität und die Inklusion von jungen Wissenschaftler. Es ist zu erwarten, dass die MC mindestens einen jungen Forscher einstellt. Es ist zu erwarten, dass die MC mindestens einen jungen Forscher einstellt. Es ist zu erwarten, dass die MC mindestens einen jungen Forscher einstellt.

**Low Early Career Investigator (ECI) means that a researcher has received a junior research fellowship within their PhD / An Early Career Investigator (ECI) is a researcher with a maximum of 5 years research experience after the PhD.

Actions Open in the Humanities Field

Nummer	Titel
CA15221	Advancing effective institutional models towards cohesive teaching, learning, research and writing development.
CA16105	European Network for Combining Language Learning with Crowdsourcing Techniques
CA16204	Distant Reading for European Literary History
CA17131	THE SOIL SCIENCE & ARCHAEO-GEOPHYSICS ALLIANCE: GOING BEYOND PROSPECTION
CA18110	Underground Built Heritage as catalyser for Community Valorisation
CA18119	Who Cares in Europe?
CA18136	European Forum for Advanced Practices
CA18137	European Middle Class Mass Housing
CA18204	Dynamics of placemaking and digitization in Europe ´s cities
CA18231	Multi3Generation: Multi-task, Multilingual, Multi-modal Language Generation



universität wien Participate in a Networking Activity

Training School	Short Term Scientific Mission
Trainees from COST Full Members	Applicants from PARTICIPATING COST Full Member
1,500 EUR grant	2,500 / 3,500 EUR
160 EUR meals / accommodation / day	160 EUR meals / accommodation / day
https://www.cost.eu/cost-actions/browse-actions/	https://www.ffg.at/europa/cost/bereiche-at

Source: COST Association, 2018 /FFG



- **COST Connect** are a series of thematic events, which provide an open space for researchers, policy makers and research and innovation (R&I) stakeholders to network and grow their ideas. It brings together a broad set of actors from the European Research Area (ERA) and beyond with the aim to stimulate and strengthen multi-stakeholder partnerships.
- **COST Academy** is an initiative that offers training, workshops and mentoring that better the performance of Action networks. The Academy is focusing on developing the skills of young and/or Inclusiveness Target Country researchers.
- **COST Science** informed policy advice is an initiative to connect COST experts into science-informed policy advice on relevant EU topics.
- **COST Innovators Grant** will be available with the implementation of Horizon Europe, the next framework programme.



- COST Actions should start within 3 months of approval
- Six Month Work Programmes
- Management Committee meetings
- Open to new members (first three years)
- Vademecum (financial rules)



As a COST external expert, you will have the opportunity to:

- Contribute to the evaluation of COST Open Call proposals.
- Participate in the assessment of Action results and outcomes.

You will:

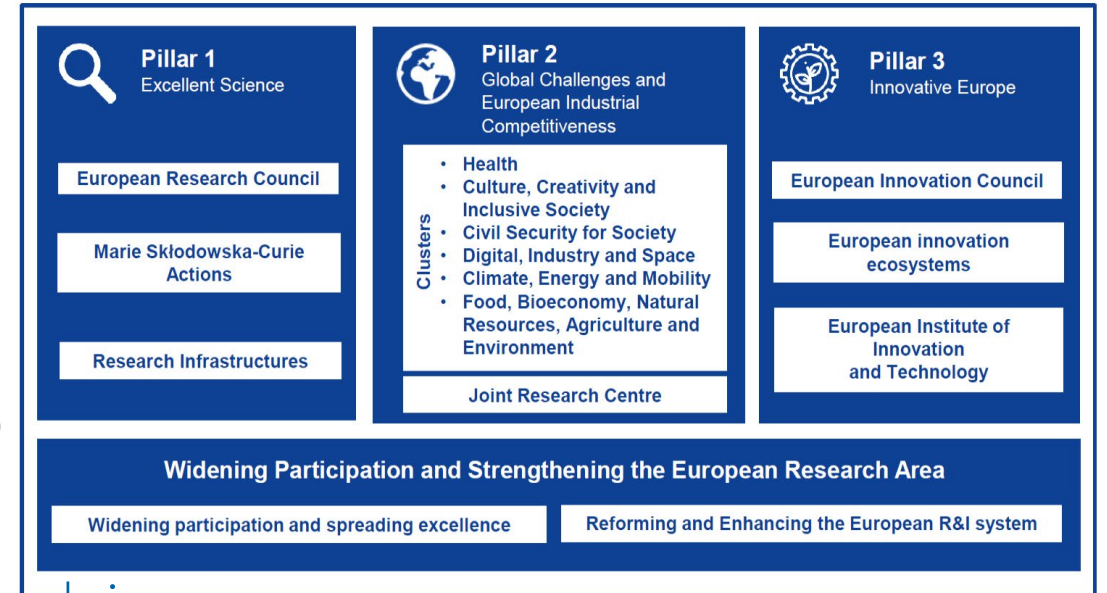
- Gain insight into the latest scientific and technological developments put forward by COST scientific communities.
- Build on your reputation in the research community through the recognition of your role as a COST expert.
- Contribute to the impact and success of the COST Programme.
- <https://www.cost.eu/who-we-are/working-with-us/participate-external-expert/>

Horizon Europe

- Commission proposal for budget: €100 billion (2021-2027)
- Mission orientated and impact driven
- First Work Programmes probably December 2020
- Orientations towards first Strategic Plan

https://ec.europa.eu/info/sites/info/files/research_and_innovation/strategy_on_research_and_innovation/documents/ec_rtd_orientations-he-strategic-plan_122019.pdf

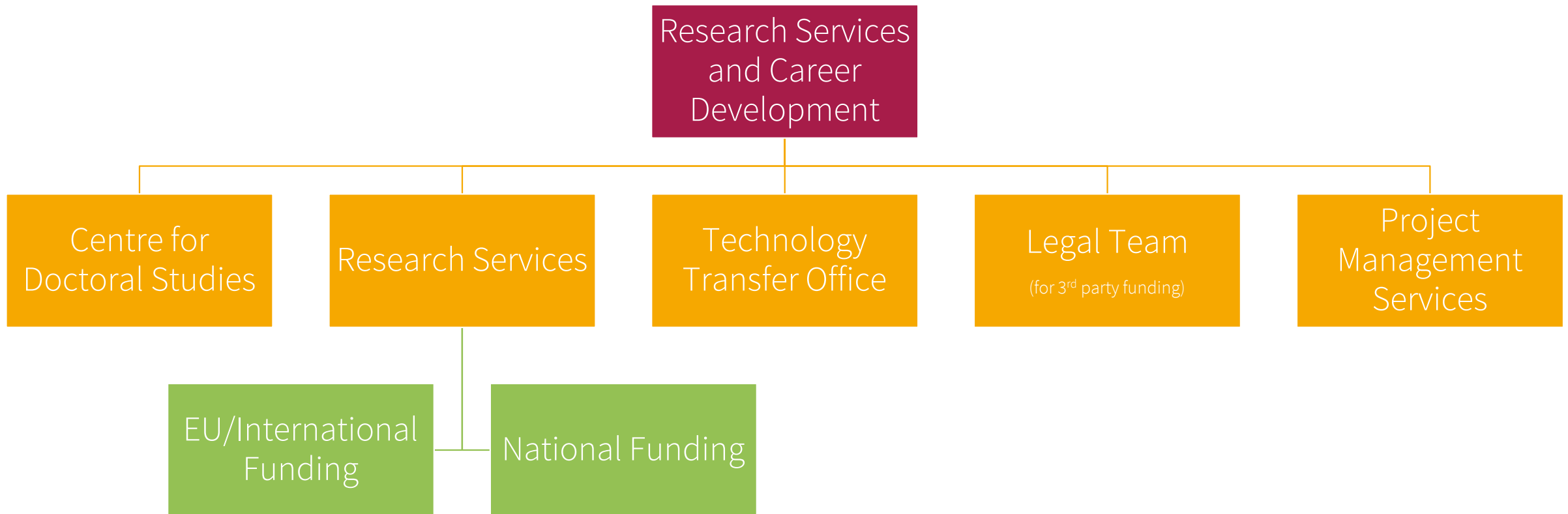
Horizon Europe: Preliminary structure



About the DLE Research Services and Career Development



Who are we?





- Proposal Checking
- Project Management
- Application documents (set text, budget tools, FAQs)
- Workshops and Information Events
- Policy and Funding Information
- One to One Meetings

Female Postdoc Programme REWIRE Call 2 is open: <https://rewire.univie.ac.at/>
(deadline 30th April)



REWIRE
Reinforcing Women in Research



Amy Radlberger

amy.radlberger@univie.ac.at

Helmut Schaschl

helmut.schaschl@univie.ac.at

**Research Services and Career
Development**

Berggasse 7,
1090 Vienna

W: [forschung.univie.ac.at](https://www.forschung.univie.ac.at)

Member Countries

Albania, Austria, Belgium, Bosnia and Herzegovina, Bulgaria, Croatia, Cyprus, Czech Republic, Denmark, Estonia, Finland, France, Germany, Greece, Hungary, Iceland, Ireland, Italy, Latvia, Lithuania, Luxembourg, Malta, the Republic of Moldova, Montenegro, The Netherlands, The Republic of North Macedonia, Norway, Poland, Portugal, Romania, Serbia, Slovakia, Slovenia, Spain, Sweden, Switzerland, Turkey, United Kingdom

ITC Countries

- Albania, BosniaHerzegovina, Bulgaria, Croatia, Cyprus, Czech Republic, Estonia, Hungary, Latvia, Lithuania, Luxemburg, Malta, Montenegro, Poland, Portugal, Romania, Republic of Serbia, Slovakia, Slovenia, Turkey and the former Yugoslav Republic of Macedonia.

Near Countries

- Algeria, Armenia, Azerbaijan, Belarus, Egypt, Georgia, Jordan, Kosovo, Lebanon, Libya, Moldova, Morocco, the Palestinian Authority, Russia, Syria, Tunisia and Ukraine.



Number of COST Members	Minimum number of ITC
7	4
8	4
9	5
10	5
11	6
12	6
13	7
14	7
15	8
16	8
17	9
18	9
19	10
20	10
21	11
22	11
23	12
24	12
25	13
26	13
27	14
28	14
29	15
30	15
31	16
32	16
33	17
34	17
35	18
36	18
37	19